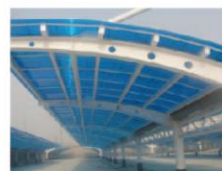
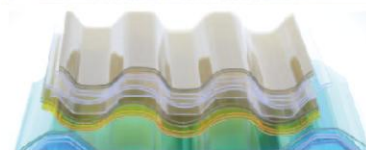
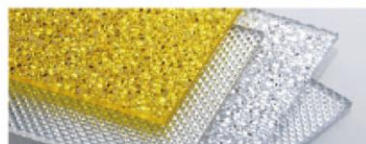
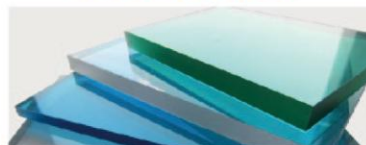
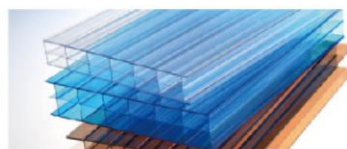




Energy conservation
Environmental protection

PC Hollow Sheet
PC Solid Sheet
PC Corrugated Sheet



ISO9001:2015 APPROVED

Our company has been awarded the ISO9001:2015 International
Quality Management System Authentication

GUANGZHOU YUEMEI TECHNOLOGY MATERIALS CO.,LTD

Address: No.159,Taixin road, Ningxi town, Zengcheng district, Guangzhou, China

T E L: +86-20-83887367 F A X: +86-20-83860205

www.ympcsheet.com



YUEMEI PC (polycarbonate) Hollow sheet, Solid Sheet, Corrugated Sheet are made from the imported raw material. With UV coating, we assure our customers of ten-year quality guarantee for our products. Our products meet the National Industry Standards and have been approved by National Chemical Construction Material Testing Center. Our company has been awarded the ISO9001:2008 International Quality Management System Authentication; The ROHS Environment Protection Testing Authentication by SGS as well as Supplier Authentication. We strictly carry out the 9S management system in the factory and control quality issues through the whole course of production. Now a great variety of YUEMEI PC sheet and PC accessories are available to order. Your order can be customized if needed.

Any enquires will be warmly welcomed and ensuring quality & professional service will be provided.

FEATURES

- | | |
|---|----------------------------------|
| • Light and high environmental | • High strength |
| • High impact strength | • Simply processed and installed |
| • Good weather resistance and uv protection | • Saving energy |
| • High light-transmission | • Good flame resistance |
| • Excellent heat insulation capability | • Ten years guarantee |

APPLICATIONS

- | |
|---|
| • Industrial building: industrial plants, warehouses, roof lighting |
| • Agricultural facilities: modern agriculture greenhouse, modern farms, green eco-restaurant, Hanabusa |
| • Municipal building: lighting corridors, carport, canopy, shelters, kiosks, road noise barriers, railway stations, bridges |
| • Sports venues: stadiums, skylights outdoor pool, open-air stadium roof |
| • Commercial applications: architectural decoration, stage design, exhibition layout, directional signs, Product licensing, advertising light boxes |
| • Home decoration: indoor and outdoor decoration, private residential lighting, indoor ceiling, indoor partitions, bathroom partitions, interior doors and windows, sun room, storm ceiling, lampshades |
| • Security facilities: prisons, bank security counter, jewelry store anti-theft windows, museum security, police riot shields, industrial machinery shell |



PC HOLLOW SHEET LIST

Special colors and specifications can be customized

Item	Max Width (mm)	Thickness (mm)	Weight (kg/m ²)	Min Curving Radius (mm)	Min Span Accordingly (mm)
PC twin-wall sheet	1220 2100	4	0.90	700	1500
		5	1.10	875	1800
		6	1.30	1050	2000
		8	1.50	1400	2700
		10	1.70	1750	3300
#.X type PC triple-wall hollow sheet	1220 2100	10	2.00	1850	3600
		12	2.20	2220	4300
		14	2.40	2590	5000
		16	2.70	2960	5800
		18	3.00	3330	6400
PC honeycomb sheet	2100	20	3.30	3700	7000
		8	1.90	1400	2800
		10	2.10	1750	3500
PC six-wall sheet	2100	12	2.30	2100	4200
		16	3.00	2800	5600
		20	3.20	3500	7000
		25	3.60	4375	8750



type PC triple-wall hollow sheet



X type PC triple-wall hollow sheet



PC honeycomb sheet



PC six-wall sheet

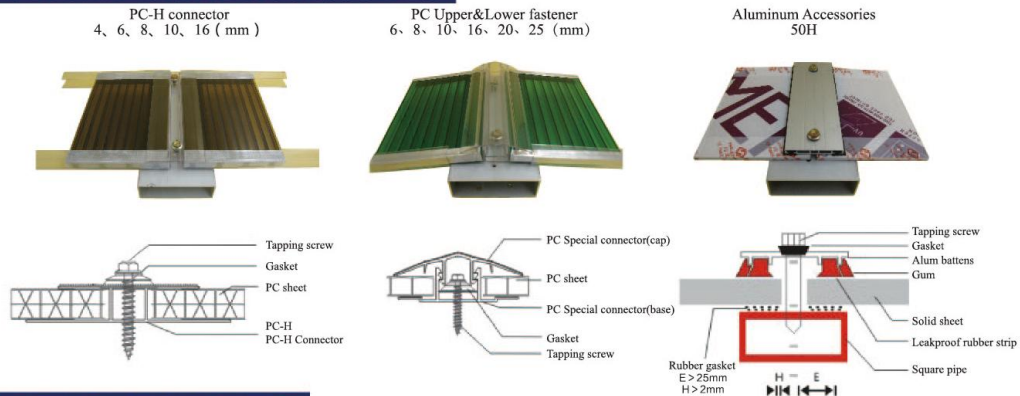
PC SOLID SHEET LIST

Item	Max Width (mm)	Thickness (mm)	Weight (kg/m ²)	Min Curving Radius (mm)	Min Span Accordingly (mm)	Remark
PC solid sheet	1220	2.0	2.40	360	720	Customized 2.0mm-3.0mm, 30M/roll 3.6mm-4.5mm, 18M/roll 5mm or above packed as sheet
		2.2	2.64	390	780	
		2.4	2.88	430	860	
PC embossed sheet	1560	3.0	3.60	540	1080	
		3.6	4.32	650	1300	
PC abrasive sheet	1820	3.8	4.56	680	1360	
		4.0	4.80	720	1440	
Light diffusing PC sheet	2100	5.0	6.00	900	1800	
		6.0	7.20	1080	2160	
Bulletproof PC sheet		8.0	9.60	1450	2900	
		10.0	12.00	1800	3600	
		18.0	21.60			

TECHNICAL DATA

Characteristics	Unit	PC twin-wall sheet	PC triple-wall hollow sheet	PC solid sheet	PC embossed sheet
Light transmission	%	40~82	25~75	88~92	60~70
Impact strength	J/m	2.1~2.3	2.1~2.3	600	400
Coefficient of thermal expansion	mm/m°C	0.065	0.065	0.065	0.065
Heat conductivity	W/m°C	3.0~3.9	2.2~3.2	0.21	0.21
Service temperature	°C	-40°C~+120°C	-40°C~+120°C	-40°C~+120°C	-40°C~+120°C
Tensile strength	n/mm ²	≥60	≥60	≥61	≥62
Bending strength	n/mm ²	100	100	100	100
Bending elastic modulus	mpa	2400	2400	2400	2400
Tensile stress at break	mpa	≥65	≥65	≥130	≥130
Elongation at break	%	≥100	≥100	≥130	≥130
Sound insulation effect	db	20 decibel decrease for 10mm thick sheet	25 decibel decrease for 16mm thick sheet	35 decibel decrease for 6mm Solid sheets	28 decibel decrease for 3mm particle board

POLYCARBONATE ACCESSORIES



INSTALLATION NOTES

- Don't remove the film (the side with the printing should be outward) before installation for preventing being scratched when installed. Removing the film 50mm from the sheets being polluted by the glue. If it must be continue being protected, remove it first and cover it again. Absolutely avoid removing the film by the sharp tools, otherwise, it will lead to the crack in the bending.
- PC sheet never touch with alkaline substances and corrosive organic solvents, such as: alkali, alkaline salts, amines, ketones, aldehydes, esters, ethers, thinner, methanol and isopropanol, etc. Paintwork of skeleton can not touch with the PC sheet.
- Please choose suitable silicone rubber and rubber gasket for polycarbonate sheet.
- Reservation sheet expansion space in drilling installation. Diameter of hole should be bigger than 50% diameter of the screw. Screws can not be too tight and close. We recommend using one screw every 50cm or more. (The screw spacing is greater if the sheet is thicker.)
- Two pieces of PC sheet joint according to the local temperature changes need to leave enough space for expansion. Generally the gap width is more than 50% diameter of the screw.
- Bending direction must be perpendicular to the inner hole of PC sheet in cold-formed. Cold-formed bending radius of the polycarbonate hollow sheet must be greater than 175 times of own thickness. Cold-formed bending radius of the polycarbonate solid sheet must be greater than 100 times of own thickness. Computation formula of cold-formed bending radius: $R = \frac{1}{2h} + \frac{m^2}{8h}$ (R =bending radius; h =rise of arch; m =span)
- Never direct drill the screws of the sheet in the process of construction. It should be drilling the screw's hole first, than install screw. Forbid to install the screw in bending stress points if the PC sheet needs to curve shape.
- Stop installing when the materials in the rain and humid.
- Regular cleaning and maintaining to prevent acid corrosion and dust on the sheets, suggest that washing with warm water.

PC CORRUGATED SHEET

No.	Model	Structure	Standard colors	Thickness	Length
1	PCT903-210-26		Clear Opal Lake blue Green Can be customized	0.8 3mm	Conventional 5.8m Can be customized
2	PCT810-76-16				
3	PCT830-171-37				
4	PCZ930-79-16				
5	PCZ912-76-18				

PROJECTS



Swimming pool



Stadium



Greenhouse



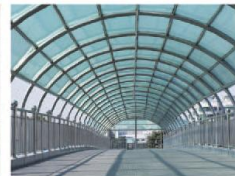
Daylighting roof



Advertising light boxes



Garage channel



Footbridge



Outer wall fence

CERTIFICATIONS



Quality suppliers of alibaba



Quality suppliers of Made-in-China.com



ISO certification



SGS-ROHS



PC Hollow Sheet Test Report



PC Solid Sheet Test Report

TO CUSTOMERS

All data mentioned above, which can only be for reference, is based on our tests with standard samples. As we are not assured that the customers how to use the products, we can not guarantee the same effects for all the customers. Even though we provide our testing data here, it is still necessary for the users to check and confirm whether our products are fit for their needs or not. Any data of ours both in oral and written form are only for your reference and will not bound the any legal responsibility.